



# World Puppetry Day Scavenger Hunt

Puppeteers move and perform objects in different ways to tell stories. Sometimes they use their hand or hands and sometimes they use their whole body. Learn about the five basic types of puppets that puppeteers use as you explore the Worlds of Puppetry Museum!

How many examples of each type can you find in the museum? Check them off as you go and write the name and country of origin of your favorite example under each type. Remember, there is more than one right answer!

## HAND

To bring a HAND PUPPET to life, one (or sometimes two) of the puppeteer's hands fits inside the puppet to control its motion.



---

## STRING

Often called a "marionette," a STRING PUPPET hangs from a controller by one or more strings. A puppeteer manipulates the strings to make the puppet move.



---

## ROD

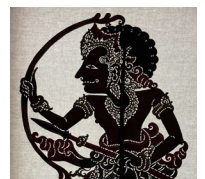
A ROD PUPPET is built around a central pole supporting the puppet's body. Separate rods are sometimes attached to arms and legs. Puppeteers can push, pull, and turn these rods.



---

## SHADOW

A puppet builder cuts out shapes to create a SHADOW PUPPET. A puppeteer then holds the puppet between a light source and a screen. The audience sees the shadow.



---

## BODY

A BODY PUPPET relies on the puppeteer's entire body for control. The puppet moves when the puppeteer moves their legs, arms, head, and/or body.



---

## BONUS

Feeling like you've got it mastered in the Global Gallery? Then head over to the Henson Collection and see what types of puppets you find there that fit into these categories! List a Henson character that is a body puppet here:

---