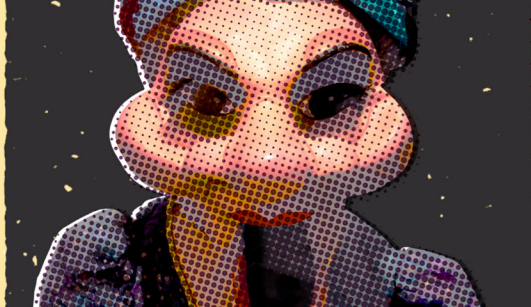
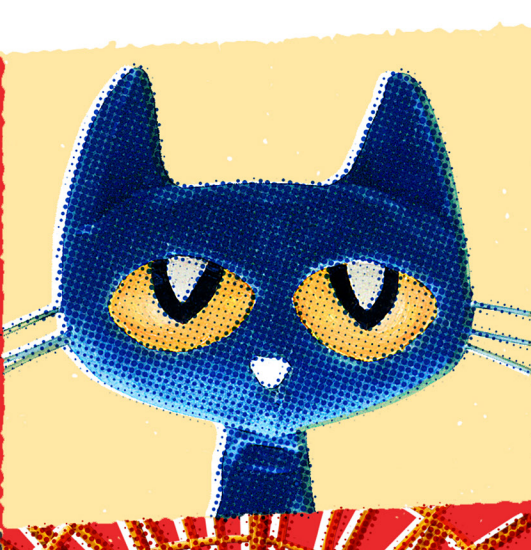


2019–2020

Annual Report



A YEAR LIKE NO OTHER



As I write this letter, I am struck by how uniquely different this report is when compared to those in prior years. For the first time, this letter is written by someone other than our Founder and former Executive Director, Vincent Anthony. With a legacy spanning over forty years, Vince leaves the Center to enter (semi) retirement, confident in the impact of his vision to our city and to the international puppetry community. Throughout his career leading the Center, he has won numerous awards as a community and arts leader, and most importantly has won the hearts of generations of children across the Southeast. It is my honor to take the baton and care for that legacy into the future, and I am appreciative of the precious time he has spent with me during this transition. Thank you, Vince, for everything.

The 2019-2020 fiscal year began with excitement as we launched the Center's 41st Season—renewing the organization's commitment to inspire new and returning patrons with its unique, holistic blend of presenting fully-staged theatrical puppetry performances, conducting hands-on, interactive workshops, and exhibiting our growing collection of museum artifacts. The summer saw the Center's theaters filled with families enjoying theatrical performances and reveling in nostalgia during the '80s Family Film Festival weekend, and the Atrium transformed into the mystical world of Thra to celebrate the release of *The Dark Crystal: Age of Resistance* with The Dark Crystal Ball.

As the autumn of 2019 arrived in Atlanta, enthusiastic fans flocked to the Center to engage with the arts and celebrate milestones such as Jim Henson's (and the Center's) birthday with a Henson Cosplay Day in September, *Sesame Street*'s 50th anniversary in November, and of course, the holiday season with the return of the Center's *Rudolph the Red-Nosed Reindeer*TM Family Series production.

The puppetry community and kids of every age mourned the passing of Carroll Spinney in December 2019. The Center honored our friend by moving his two most recognizable characters, Oscar the Grouch and Big Bird, together in our Jim Henson Gallery where they can share the story of Mr. Spinney and his tremendous impact on *Sesame Street* and his friend, Jim Henson.

The 2020 year started well with over 20,000 audience members joining us in the rainforest canopy to attend the world-premiere Family Series production of *Stellaluna*, based on Janell Cannon's award-winning children's book. With financial support from the Georgia Council for the Arts and the creative contributions of Burgess-Peterson Academy's 2nd grade classes, the Center created its largest set to date, allowing audience members to watch *Stellaluna*—a fruit bat—and the other creatures of the Gambian rainforest fly freely amongst the trees. After *Stellaluna*'s seven-week run,

family audiences came to the Center to be mesmerized by Alex & Olmsted's innovative *Milo the Magnificent*, and adult and teen audiences experienced grief and the unconditional love of a dog through *New Owner*, performed by the Australian company The Last Great Hunt. By the middle of March, the Center had welcomed over 100,000 visitors through its doors, including over 50,000 children who came to the Center on field trips with their schools, daycares, and other community groups.

In March of 2020, and for the first time since 1978, the Center was forced to cancel all on-site programming; its theaters fell dark, its classrooms emptied, and its artifacts sat isolated from their adoring patrons. However, with crisis comes innovation, and with creativity and inspiration as key components of the Center's mission, the Center's award-winning Digital Learning team ramped up their studios and quickly brought live, interactive puppet shows and workshops to children isolated at home around the world. Through the newly minted Center@Home program, our creative teams across the Center were able to offer free and low-cost performances, workshops, museum tours, and educational segments designed to blend puppetry arts with educational content in a virtual format. By the end of May 2020, the Center had produced and shared over 100 hours of free content with over 200,000 households all across the United States and in 88 countries around the world, leading *Atlanta Magazine* to include the Center in its Best of 2020 List as the city's "Best Home Edutainment" option.

With the support of Center staff, the guidance and leadership of the Board, and the financial support of all of our generous donors, we were able to use the slower time resulting from the pandemic to incubate ideas for when the Center reopened. We are optimistic and excited about our future! We adapted much of the Center's regular programming so we could begin offering and selling it in a digital format for the first time to the public, and we developed the rigorous cleaning and social distancing protocols that would enable us to begin a phased reopening beginning in the late summer of 2020. Our successes were hard-earned, but as spring yielded to summer once more, the Center began to think less of what we couldn't do and more of what we will do to engage with our fans and patrons in this "new normal."

In the end, FY19-20 proved to be a chaotic, uncertain year for everyone, but it also proved to be a transformational year for the Center by revealing its strength and resilience. Perhaps that shouldn't come as a surprise. After all, Vince chose to build the Center in Atlanta because he saw something special here; every flame needs a catalyst, and for this city, artistic expression serves as an ethereal spark. Atlanta is the city of resurgence. We continue to rebuild and renew ourselves after each crisis, and this one shall be no different. Similarly, by adapting to meet the future head-on, the Center was able to serve the community and remain an essential part of Atlanta's artistic landscape. So, on behalf of the Center's staff and Board of Directors, thank you for helping us get through this tumultuous year. With your support, the Center's creative spark endures.

Sincerely,



IMAGINATION

Following nearly two years in design and development, *Stellaluna*, based on the best-selling children's book by Janell Cannon, made its debut at the Center for Puppetry Arts. Ms. Cannon graciously traveled to Atlanta from San Francisco for a series of press events, a book signing, and a special performance followed by a Q&A with the audience, moderated by the Center's Artistic Director, Jon Ludwig.

As part of the development of *Stellaluna*, the Center continued the collaborative tradition of bringing thought-provoking and imaginative programming to young minds through its partnership with Atlanta Public Schools' Burgess-Peterson Academy. Collaborations on productions such as *Stellaluna* foster creative exploration around narrative themes through myriad lenses, including reading and reflection activities that build meaningful connections between students and the source material, while exploring the themes of identity and acceptance.

Earlier in the season, the Center presented an eighties-style urban take on the classic tale of *Beauty and the Beast* and took audiences on an educational intergalactic adventure with *SPACE!* Critically-acclaimed visiting artists Alex and Olmsted of Maryland ignited creativity and curiosity with their popular production of *Milo the Magnificent*, and the Center brought frights and delights to audiences of all ages during the Halloween season with *The Legend of Steepy Silly Hollow* by the Frogtown Mountain Puppeteers of Maine, as well as the Center's own *The Ghastly Dreadfuls* for adults 18+. It was a year filled with fresh, unique, and stellar productions.

The Museum also increased the scope of its programming. Wiggle Wednesdays, the Museum Department's weekly programming for toddlers, offered unique sensory and narrative experiences for young ones and their families to explore the world of puppetry. By combining music, movement, crafts, games, and puppet-led storytelling, this program is a unique example of the Center's mission-infused programming. The Museum also worked with *Sesame Street Live* to bring part of the touring company to the Center for a special. Members of the cast came to the Center along with body puppets, Elmo and Grover. The sold-out evening included singing, dancing, puppet-making, and a photo op with the characters.

For adults, the Museum brought fans of *The Dark Crystal* into the expansive fantasy world of the film through the special exhibition: **Jim Henson's The Dark Crystal: Worlds of Myth and Magic**. Museum-goers got an inclusive look behind the scenes at how Jim Henson developed the story, as well as its impact and enduring legacy. To celebrate the exhibition, the Center invited fans to attend The Dark Crystal Ball, an immersive event that transformed the Center into the fantasy world of Thra.



EDUCATION

As a learning space, the Center is distinctive in weaving together the history, culture, and craft of puppetry to create unique learning experiences for every visitor. This extends beyond the Center's physical location by way of Digital Learning programs, making one-of-a-kind experiences like the *Worlds of Puppetry Museum* accessible to anyone across the world through digital tours.

Create-A-Puppet Workshops™, one of the Center's flagship offerings, give participants of all ages the opportunity to build their own puppet alongside our friendly and knowledgeable staff. Of note, among these experiences this year was *A Pickle of Pink Elephants: The Atlanta Beltline Lantern Parade Puppet Workshop*, where adult enthusiasts assembled elephant rod puppets with animated trunks! These workshops promote hands-on learning and accompany many of the Center's productions throughout the season.





The Center continued its history of collaborative learning and outreach with partnerships between Burgess-Peterson Academy, Girl Scouts STEM Days programming, and by building sensory-friendly experiences for neurodiverse individuals with learning differences or ASD. By taking individual differences into account, the Center expanded the reach of educational programming beyond neurotypical audiences and facilitated tailored experiences grounded in inclusion and accessibility.



COMMUNITY

GLOBAL, LOCAL

In June, the Center was honored to present the Chen His-Huang Puppet Troupe of Taipei, Taiwan, led by a fifth-generation master puppeteer. This company is considered a national treasure in Taiwan, presenting a dazzling display of puppet martial arts and acrobatics. In addition to the performance, the Center also hosted a reception for the Mayor of Taipei in celebration of the 40th anniversary of the Taipei-Atlanta Sister Cityhood.

Community connections allowed the Center to bring unique puppetry experiences to a plethora of audiences and strengthen its network of support with the local community, nationally and beyond. The Center connected with the global community through diverse programming, allowing audiences to experience where culture and puppetry intersect. *Discovery Days: Discover Europe* invited patrons to explore folktales from England and Italy, as well as learn about French puppetry styles in a hands-on Puppet Creation Station experience.





The Center remained active in the Atlanta community with a presence at Dragon Con 2019, bringing the rich history of Jim Henson's impact on the world of puppetry to convention-goers in innovative ways. Representation at local events included the East Atlanta Village Strut and the Children's Healthcare of Atlanta Christmas Parade where the Center's new Phoenix puppet made public appearances. The Center also supported Macy's Believe campaign and their Make-A-Wish Foundation by participating in Fair Saturday (an international initiative to have artists/arts organizations donate profits from revenue earned the Saturday after Thanksgiving to human service organizations around the world).

Thanks to a generous grant from The Coca-Cola Foundation, the Center was able to offer 3,388 students deeply-discounted (and in some cases, free) admissions via the Field Trip Fund. Additionally, The Coca-Cola Foundation was the presenting sponsor of the Center's Sensory-Friendly Sundays in 2020, enabling over 800 patrons and their families to visit the Center and enjoy a supportive and welcoming environment for individuals with sensory-processing conditions (such as Autism Spectrum Disorder).

THE PIVOT

With the unprecedented challenges brought on by COVID-19, the Center explored new opportunities to serve our audiences. *Stellaluna* closed just before the start of the pandemic. To protect the community and the staff, the Center closed its doors in March and shifted exclusively to digital learning and experiences.

Knowing that many parents and children were homebound, the Center moved quickly to provide free programming through our Digital Learning platform and social media, producing over one hundred digital programs watched by over 200,000 people across 89 different countries in just two months. Many of these programs were free in an effort to support families at a time of uncertainty and fear.

As the pandemic continued, the Center brought in visiting artists as well as artists-in-residence to offer online puppet shows and curriculum-based workshops. The Center also moved its archival library online, offering some of the exciting and beloved archival works digitally for the first time.





Safety Dog returned to facilitate education and understanding around the Center's coronavirus response.

In addition, *Pete the Cat* author James Dean, *Stellaluna* author Janell Cannon, and *Ruth and the Green Book* author Calvin Ramsey were kind enough to join the Center for several Zoom events that included the archival screening of the puppet shows followed by Q&A sessions with the authors.

The Center's pandemic response included the return of Safety Dog, a wonderful character initially created in partnership with DeKalb County CEO Burrell Ellis, with support from the county's Board of Commissioners, School System and Public Library, alongside The Humana Foundation. Conceived as a response to the 2008 H1N1 outbreak, Safety Dog returned with an announcement to highlight precautions the Center implemented to mitigate the spread of COVID-19.

In April, the Center hosted a virtual town hall for the puppetry field to explore the impact that COVID-19 was having on American puppeteers. As a unique example of our values in action, this forum was instrumental to the Center living its mission to support the people behind the puppets. That same month, the *Atlanta Journal-Constitution* ran an article highlighting the Center's streaming performances and expanded lineup of digital learning activities and workshops. The exposure provided the Center with opportunities to bring programming directly to audiences while simultaneously creating new pathways for exposure and support worldwide. During this crisis, the Center was particularly grateful for the significant financial support from The Jim Henson Foundation.

On April 15th, the Center held its first ever virtual board meeting! Interim Executive Director, Beth Schiavo, shared the success of the Center's @ Home programming, which was viewed over 100,000 times from 48 different countries around the world!

OUR VALUES

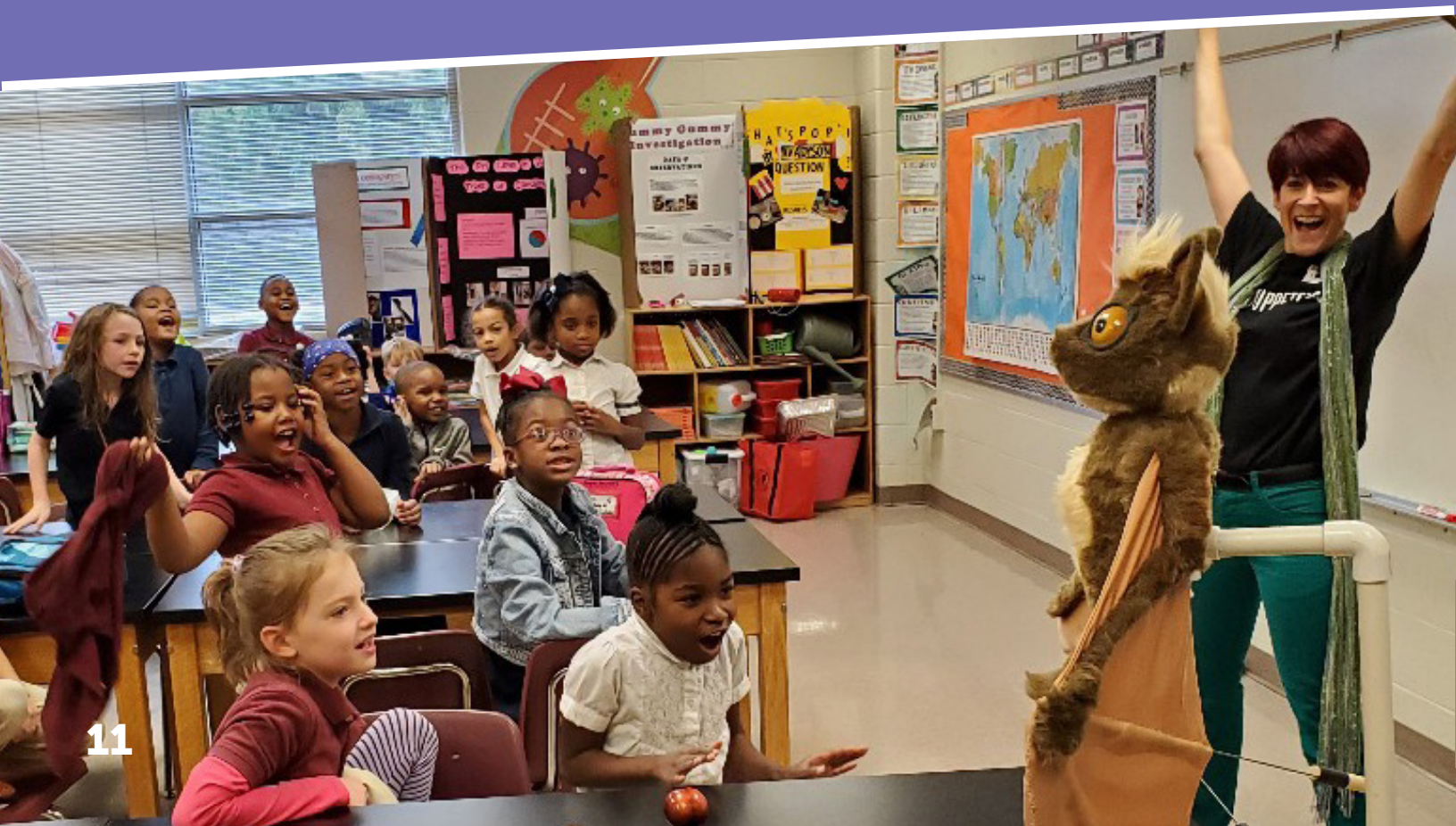
Inspire every generation

Provide artistic experiences

Unlock imagination

Promote the inspiring magic of puppetry

Support the people behind the puppets



Beau Brown hosts Mid-Week Monitor Night, an interactive workshop where interested parties can practice puppetry for film and television!



Beauty and the Beast cast members Greg Hunter and Jimmica Collins were featured on the cover of The Atlanta Voice! This creative ensemble shared art and inclusion with international audiences through their memorable performance together.



Center puppeteers partnered with Queen Elsa of Arendelle and her sister Anna to bring holiday cheer to visitors at Colony Square.



Center puppeteers Brian, Dolph, Kristin, and Maggie rehearse 'We are Santa's Elves' for the holiday production of Rudolph the Red-Nosed Reindeer™.

In October, Center Founder, Vincent Anthony, was interviewed by WSB-TV anchor, Carol Sbarge, shedding light on the Center's enduring legacy and the power of puppetry as a narrative medium.



The Center's production of Harold and the Purple Crayon received Suzi Bass Award nominations in all five Theater for Young Audiences categories – winning the award for Outstanding Design at the November 4 ceremony which took place at the Conant Performing Arts Center.



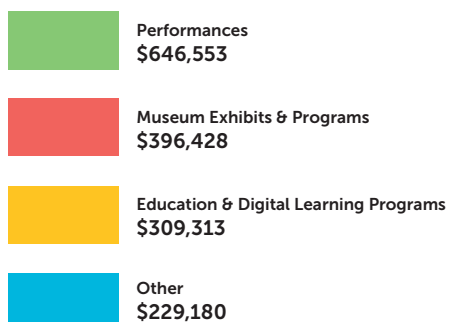
Brought to life by Center puppeteers, the Phoenix sparked joy at the Children's Healthcare of Atlanta's Christmas Parade.



The January world premiere of Jon Ludwig's adaptation of *Stellaluna* exceeded all expectations! The Center had the honor of hosting acclaimed *Stellaluna* author/illustrator, Janell Cannon, on opening weekend.

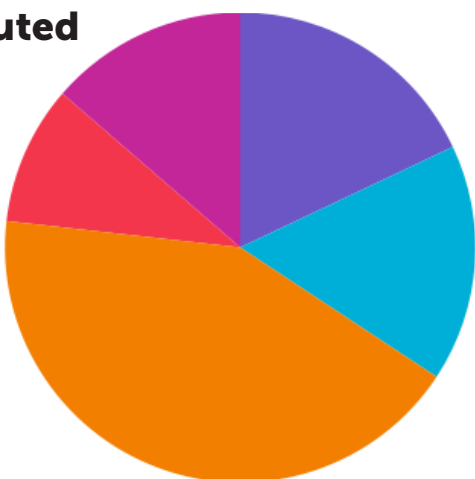
REVENUE

Earned



Total Earned Income
\$1,581,474

Contributed



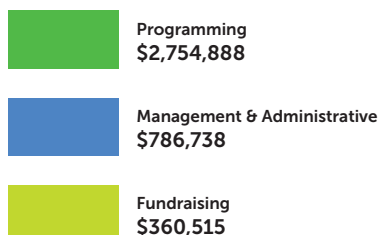
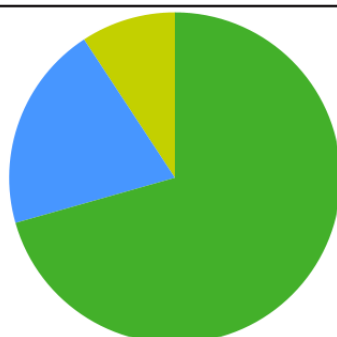
Total Contributed Income
\$1,405,758

In-Kind Support
\$217,053

Endowment & Other Funds Released for Operations
\$100,000

Total Operating Income
\$3,304,285

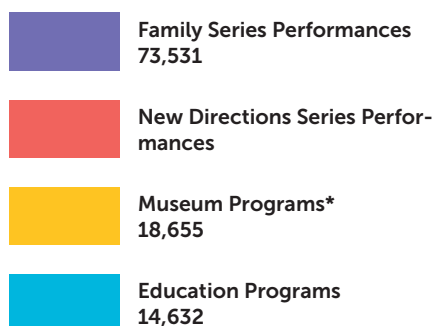
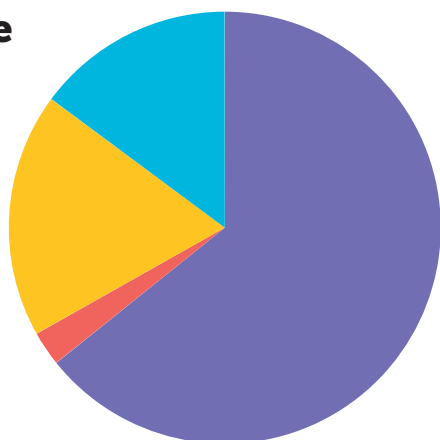
Expenses



Total Operating Expenses*
\$3,902,141

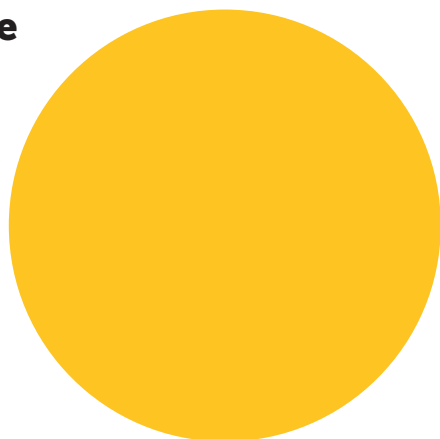
ATTENDANCE

On-Site



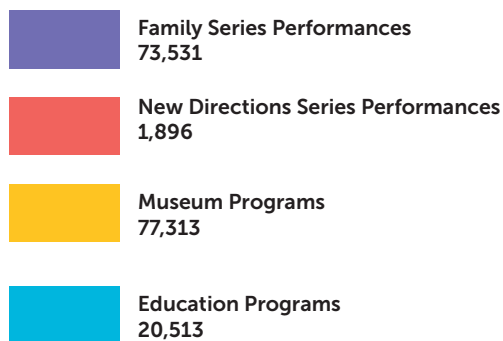
Totals
108,714

Off-Site



Totals
5,881

Totals



Total Attendance
114,595

*Museum offsite attendance is Jul-Aug 2018 estimate for airport exhibit. Exhibit closed Sep 2018 due to airport construction.

DONORS

July 1, 2019–June 30, 2020

\$150,000+

Cheryl Henson & The Jim Henson Foundation

\$100,000 +

The Coca-Cola Foundation

\$50,000 +

City of Atlanta Mayor's Office of Cultural Affairs

The Jane Henson Foundation

The Sara Giles Moore Foundation

The Zeist Foundation, Inc.

\$25,000 +

Anonymous

Charles Loridans Foundation, Inc.

Frances and Beverly DuBose Foundation

Fulton County Arts & Culture

WarnerMedia

\$15,000 +

Institute of Museum and Library Services

The Shubert Foundation, Inc.

Wells Fargo

\$10,000 +

Deborah Hicks Ellis

Georgia Power Foundation, Inc.

Judy and Ed Garland

Lisa Henson

Macy's

Marcia and Robert Gilbreth

Martha "Mot" Dinos

Publix Super Markets Charities

Samantha Berger

The George M. Brown Trust Fund of Atlanta

The Whitcomb Family Foundation, Inc.

\$5,000 +

Anne L. Cross
Anonymous
BNY Mellon Charitable Gift Fund
Fifth Third Bank
Gail and John Chandler
Georgia Council for the Arts
Georgia-Pacific Foundation
Gil and Leslie Rapley
Heather Henson
Jeffrey and Vanessa Blake
Kathleen and Mike Dunlap
Kristi and Bill Patterson
Lucy and Vir Nanda

Margo Brinton, Ph.D. and Eldon Park
Merchant & Gould P.C.
Mrs. C. Preston Stephens
National Endowment of the Arts
Nordson Charitable Giving Programs
PNC Bank
Sherry P. Taylor, M.D.
The Junior League of Atlanta, Inc.
The Realff Family
The Tyler Perry Foundation
Vincent Anthony
Yee Family Charitable Fund

\$2,500 +

Allen W. Yee
Anonymous
Beth Galen
Diane K. Gray
DLA Piper
Dunlap Family Charitable Fund
Ellis Fund
Eversheds Sutherland
Kathy Waller

Kids 'R' Kids Learning Academies
Lubo Fund
Mary Palmer Family Foundation
Matthew C. Pritchard
Mr. and Mrs. H. Bronson Smith
Ms. Kay B. Stueve
Princess Grace Foundation
The Goldman Falk Fund

\$1,000 +

Antony Jose Ma Junior
Beverly J. Searles Foundation
Bradford Clark
Bradley N. Currey Jr. Fund
Butler Snow, LLP
Connie Proco
Dana and Aaron Sugar
Drew Farris
Drs. Cornelia and Rasmus Wegener
Elizabeth E. Smalley and Stephen P. Young
Eugene P. Cofield, III
Facebook Payments Inc.
Franny and Rick George
JALS Foundation
Jefferson Fietek
Jennifer Stewart
Jon Ludwig and Raylynn Hughes
Joshua Gagliardi
Karen Prell
Laura Press
Leapfrog Services, Inc.
Lisa Rhodes and Mark Good

Michal Hart Hillman & S. Jack Hillman Family
Philanthropic Foundation
Mr. and Mrs. Bharat Desai
Mr. and Mrs. Christopher Campbell
Mr. and Mrs. Greg Fox
Mr. and Mrs. Haynes Johnson
Mr. and Mrs. J. Cameron Hardin
Mr. and Mrs. Mark B. Riley
Mr. Daniel Delnero
Mr. Guido Joseph Vliegen and Ms. Leslie Shaw Jones
Mr. Michael Isham
Ms. Claire Kennedy Ritzler
P.J. and Kirsten Protos
Sarah and Ed Cadagin
Scott and Jeanette DePoy
Sharon Carter and John Ezell
Susan Pease Langford
Taipei Economic and Cultural Office in Atlanta
The Faircloth Family Foundation
Triska Drake and Kim Taylor
Walter and Betsy Stark
Wayde Harrison and Bonnie Erickson

\$500 +

Allison and David Howard
Alyssa and Randall James
AT&T Charity Rewards
Beth and Edward Sugarman
Bev and Rodney Nash
Build Technology Group
Carol Hartman
Charles and Alicia Pillsbury
Daniel Marks
David and Marcie Sedacca
David Blevins
Davis/Zent Family Fund
Dellmer B. Seitter
Dr. and Mr. Trevor Feinstein
Dr. Andrew and Rebecca Grunzke
Dr. Ann D. Critz
Elizabeth and Chris Morris
Eric and Pamela H. Hansen
Erin McDaniel
Gregg and Natalie Codelli
Harry Cook
Jane and Steve Henley
Jay Bertrand
Joann and Todd Jones
Karin and Steve Stern
Katherine R. Luck

Lee Bryan
Lo Li and Jeff Carper
Margaret Kalvelage McClatchey and Devereaux
McClatchey, IV
Marshall and Nancy Levine
Maureen F. Whatley
Mr. and Mrs. Edward Cadagin
Mr. and Mrs. James Johnson
Mr. and Mrs. Robert Laverock
Mr. and Mrs. Steve McBrayer
Mr. Bob Hope
Mr. Eric Pahl
Mr. John Packman
Ms. F. Elaine Williams
Ms. Gigi M. Rouland
Robert and Lynn Holland
Sara and George Branch
Shepard B. Ansley
Susan Rogers
The Dot and Lam Hardman Family Foundation Inc.
The J. Donald Childress Foundation
The Mellott Family Charitable Fund
Tuquyen and Benny Yee
USI Insurance Services, LLC
Warren Gump

\$100 +

1st Lt. Beverly J. Blair
Aadu and Kristi Allpere
Abbey and Doug Flaum
Addie Holby
Adrian Haywood
Aimee Nix
Alan and Nancy Morris
Alan Keene
Alan Laird
Alana Mills
Alena Cope
Alessandra O. Ribeiro
Alessandro Orso
Alex and Jennifer Auxier
Alexis and Adrian Brinn
Alexis E. Appelstein
Alf Holst
Alice Rhodes Adler
Alicia Sample
Alison and Stewart Caughman
Alison Belknap
Aliza Levenson
Allan and Joyce Dias

Allen and Natalia Keele
Allison Baltzersen
Allison L. Freeman
Allison Little
Allyson C. Goff
Alonzo Horne, Jr.
Alyssa Person
Amanda Behne
Amanda Evans
Amanda Jones
Amanda L. Barnes
Amanda L. Bazzanini
Amanda Wiles
Amber J. Davis
Amber Jessee
Amber Pewitt
Amelia Kramer
Amity and Brent Dey
Amritha Joseph
Amy Chittick-Kulper
Amy Danos
Amy English
Amy Henry

Amy Lauer
Amy Potter and Ed Brown
Amy West and Trish Palmiere
Amy Windham
Analise C. Reynolds
Andrea Christopher
Andrea Darweesh
Andrea Derby
Andrea Hudson
Andres and Candace Soler
Andres Zea
Andrew Brown
Andrew Gaffney
Andrew O. Zurick
Andrew W. Massih
Angel Bales
Angela Benjamin
Angela McCreery
Angela Mehaffey
Angela Ryan
Angela Yeremian
Anisha Madan
Anita Moser

Anjali Kastorf
 Ann and Will Anderson
 Ann M. McCandliss
 Ann M. Roberts
 Ann Pearman
 Ann Valentine
 Anna Allen
 Anna and Steve Pinder
 Anna and Warren Wick
 Anna Cross
 Anna Doppel
 Anna Perry
 Anna Richardson
 Anne B. Clegg
 Anne Bortz
 Anne H. Bachman
 Annic Jobin
 Annie W. Carlini
 Anonymous
 April Tucker
 Argentry Reese and Nakia Bryant
 Arlene Langer
 Asha Ivey-Stephenson
 Ashley A. Drew
 Ashley B. Hancock
 Ashley Bertani
 Ashley Cox
 Ashley Everette
 Ashley Jenkins
 Ashley Jenkins
 Ashley S. Rogers
 Ashley Ward
 Audra Melton
 Bank of America Charitable Gift Fund
 Barb Dahlgren
 Barbara A. Melia
 Barbara and James Broadway
 Barbara and Leon Leake
 Barbara K. Troso
 Barbara Lipp
 Barbie Daniell, Ph.D.
 Baxter Jones
 Berit and Heath Turner
 Beth Ackerman
 Beth Ann Marschitz
 Beth C. Carter
 Beth Diersen
 Beth LaFond-Nash
 Beth Lammers
 Beth Lawrence
 Beth Schiavo
 Beverly C. Dean
 Beverly Partridge
 Biljana Southerland
 Bill Sanders
 Bliss Campbell
 Bobbie Paul

Bobbie Williams
 Bonnie Boling
 Bonnie Jacobson
 Bonnie Weiss
 Brad and Barbara Strickland
 Brad Kacher
 Brad Leshnower
 Bradley and Heather Hartman
 Brandon Cobb
 Brandy Sipling
 Bre Pittman
 Brenda S. Holley
 Brian and Jane Brown
 Brian and Jessica de Tagyos
 Brian and Molly Pierce
 Brian Costello
 Brian Reynolds
 Brian Thomas and Brandi Collins
 Thomas
 Briana De Veer
 Brittany C. Hart, Esq.
 Brittany House
 Brooke Capolino
 Brooke Dailey
 Brooke Kitsch
 Brother Daniel McIntyre
 Bruce Braselton
 Buffie Diaz
 C Ricciardi
 Caleb F. Gardner
 Campbell Walmsley
 Canedy Knowles
 Carey and Amber Scott
 Carla K. Jesse
 Carla Paschke
 Carly A. Ellis
 Carly Davis
 Carmen and Ronald Roberts
 Carol A. Dorsey
 Carol and Gary Godfrey
 Carol and Rob Van Leer
 Carol Ann and Ken Farrish
 Carol Cobb
 Carol E. Beck
 Carol Massey
 Carole Hopkins
 Caroline Fletcher
 Caroline Lawson
 Caroline Peek
 Carolyn and Henry Turner
 Carolyn and Timothy Perry
 Carolyne S. Hilton
 Caron and Lonnie Mattingly
 Carrie and Salvatore Macaluso
 Carrie Lanier
 Carter Morris
 Casey Jones

Cassandra Hutchins
 Cassie and Charles VanLandingham
 Catherine and Conrad Lautenbacher
 Catherine L. Kraft
 Catherine Lunsford
 Catherine Nadal
 Catherine S. Haddad
 Catherine Taylor
 Catherine Weaver
 Catherine Woodward
 Cathy Amanti
 Cathy Groome
 Celeste Porter
 Chad and Ruth Howell
 Chandra Abbott
 Chandra Borcik
 Charity and David Roe
 Charlene McGill
 Charles Crane
 Charles Germano
 Charlotte Marks
 Charlotte Murphy
 Chelsea Hutchinson
 Cheryl Collier
 Cheryl Flowers
 Cheryl Shaw
 Chibuzo Aguocha
 Chmaine and Michael Dowdle
 Chris and Colleen McDaid
 Chris and Rebecca Perkins
 Chris Merrill
 Chris Pace
 Chris Selleck
 Christian and Kelly Fichter
 Christie Crouch
 Christie Hennings
 Christie Stroud
 Christin York
 Christina Baugh
 Christina Graham
 Christina Mikosz and Joshua Siegel
 Christina Sevigny
 Christina Waide
 Christine Holland
 Christine Norton
 Christine Pearson
 Christopher Ho and Jennifer Gillis
 Christopher L. Seay
 Christopher Martin
 Christopher Ryan
 Christy Ingram
 Christy Price
 Chyrise Chason
 Ciara Green
 Cindi Williams
 Cindy and Scott Imlay
 Cindy Parchment

Ckilita Alves-Cares
 Clarisa Crawford
 Claudia Hernandez
 Col. (Ret.) and Mrs. Douglas W. McNeill
 Collin C. Bailey
 Connie M. Benham
 Cooper Fiscus-van Rossum
 Cora Diaz
 Corissa C. Wood
 Courtney Leonard
 Cristin Riffle
 Crystal O'Connor
 Cynthia Casebeer
 Cynthia DuBose
 Cynthia Lowery-Ford
 Cynthia Widner Wall
 Cyrus and Naina Bhedwar
 Dan Preister and Sean Sprague
 Dana Fallaize
 Dana Matsushita
 Danielle B. Norford
 Danielle Blair
 Danielle Iuliano
 Danielle M. Culbreth
 Danielle Rodriguez-Williams
 Danna Wright
 Danny H. Housley, Jr.
 Darby S. Barbazon
 Darcy Childress
 Darika Stevens
 Darlene and Gary Long
 Darren Ritsick
 David Kaplan
 David Minnix and Elizabeth Hagan
 David Nethero
 David Ritter
 David Stern
 David Toone
 David Tuttle
 David V. Leanza
 David Wainscott
 David Ziskind
 Dawn Gervin-Isler
 Dawn Morris
 Dawn Rutherford
 Deanna Jarvis
 Deanna Womack
 Debbie A. Mullins
 Debbie Bowen
 Debbie Nelson
 Debbie Scopp
 Debi K. Hochgertle
 Debi McNeil
 Deborah Brandenburg
 Deborah J. Pickett
 Deborah Kling
 Deborah S. Jones
 Deborah Z. Lane
 Debra Davis
 Debra Hartsfield
 Debra W. Southwell
 Deena Serafin

Deepthi Narravula
 Dennis and Mary Lou Sandretto
 Denny Smith and Sarah Hunter-Smith
 Deon and Emily Tredoux
 Deona Kalala
 Diana and Chris North
 Diana J. Blank
 Diane L. DeShazo
 Diane M. May
 Dinah Stonis
 Donald and Julie Sprinkle
 Donna Allen
 Donna and Thomas Miller
 Donna Brat
 Donna Haynes
 Donna Kehr
 Donna L. Moseley
 Donna M. Hiller
 Donna Millard
 Donna Woolley
 Donnadae and Reyes Placencia
 Donnell-Liebeskind Family
 Charitable Fund
 Dorottya Pap
 Doug and Jennifer Astrop
 Dr. Anita Gandhi
 Dr. Anon E. Westmoreland
 Dr. Ashley O. Bufo
 Dr. Benjamin-David Legrand
 Dr. Carolyn W. Higdon
 Dr. Charles A. West
 Dr. Christine Agnew-Brune
 Dr. Elizabeth M. Collins
 Dr. Ellen P. Mitchell
 Dr. Emily Yake
 Dr. Jay D'Lugin and Tyler Curtain, Ph.D.
 Dr. Katrin M. Lavell and Tricia James
 Dr. Katye Watts
 Dr. Kristi R. Anderson
 Dr. Lisa M. Cranmer
 Dr. Lynn O'Neill
 Dr. Marisa Chavez
 Dr. Marla Jane Franks and Reverend Susan Zoller
 Dr. Marshalyn Yeargin-Allsopp and Dr. Ralph Allsopp
 Dr. Mary Beth Weber and Steven Thiel
 Dr. Mary Pike
 Dr. Meredith B. Hammons
 Dr. Sarah Jane Reedy
 Dr. Tarun Subrahmanian
 Dr. Tasha M. Axam
 Dr. Thomas R. Collins and Kerstin Weis
 Dr. William G. Griffiths, IV
 Drs. Jaquelin and Edward Gotlieb
 Dustin Griffiths
 Dyapa S. Reddy
 E. L. O'Brien
 Eddy W. Romero
 Edlyn Rucker
 Edna Wood

Edward and Beverly Day Leach
 Eileen Shapiro
 Eleanor S. Click
 Elise Toukan
 Elissa Meites
 Elizabeth A. Prentice
 Elizabeth and Adam Roberts
 Elizabeth and James Elsey
 Elizabeth and Winn Keathley
 Elizabeth Barge
 Elizabeth Belden
 Elizabeth Brown
 Elizabeth Burge
 Elizabeth Demander
 Elizabeth Demers
 Elizabeth Garvish
 Elizabeth Hasler and Dr. Jennifer Hasler
 Elizabeth J. Wetherald
 Elizabeth L. Bailey
 Elizabeth Lee
 Elizabeth McKee
 Elizabeth Rollo
 Elizabeth Russell
 Elizabeth Rytlewski
 Elizabeth Stark
 Ellen W. Smith
 Elliott Spencer
 Elyssa East
 Emily and Jake Edens
 Emily and Michael Diffenderfer
 Emily C. Huie
 Emily Chamberlin and David Katz-Doft
 Emily Fuller
 Emily J. Cartwright
 Emily Jentes
 Emily Kemp
 Emily P. Love
 Employees Charity Organization (ECHO) of Northrop Grumman
 Emree Woods
 Eric Heggoy
 Eric Yoo
 Erica Hogue
 Erika Meredith
 Erika Webber
 Erin and Jason Jolly
 Erin and Josh Morris
 Erin D. Boorn
 Erin E. Gendron
 Erin Frank
 Erin Kelly
 Erin Ray
 Erin Woodsmall
 Erna and John Anderson
 Estevao Ghizoni
 Esther and Doug Garges
 Eva Dreger
 Evelyn and Sidney Metcalf
 Ewelina Lyszkowicz
 Fara Brown
 Farhan Jadavji
 Fatima Kasiah
 Faye Lefkoff

Faye Sampson-Russell and George
 A. Russell, Jr.
 Felix and Kari Figueroa
 Folami Harris
 Frances A. Clarke
 Frances Berry
 Frances C. Chang
 Frances Linz
 Franklin Jepson
 Fred Wintrich
 Gabriela Rodriduez
 George and Beth Meredith
 Georgia Thomas
 Gideon Duvall
 Gina Livingston
 Ginger and Charles Clark
 Giovanni Quiroga and Cole
 Jamison
 Glenn D. Richeson
 Gloria Walton
 Grace Kriz
 Greer and Andrew Taylor
 Greg and Cheryl Earle
 Greg Zimmerman
 Griff Sims
 Haley Dobbs
 Harry Holm
 Heather A. Biscan
 Heather Galloway
 Heather Larson
 Heather McCloskey
 Heather Roberson
 Heba Iskandar
 Heidi Molley
 Helen C. Stewart
 Hellena Moon and Elbert Chun
 Henry and Amanda Gregory
 Henry and Margaret Staats
 Henry Waszkowski
 Hollie and Vincent Meglio
 Holly V. Bentley
 Ines Hoster and Ed Siller
 Ingrid Irby
 Irena Sheppard
 Jack Jones
 Jack Prather
 Jaclyn Kinsell
 Jaclyn MacKenzie
 Jaclyn Zurawski
 Jacqueline Chapman
 Jacquelyn Foley
 James A. Taylor
 James and Catherine Bradshaw
 James and Sheryl Hilliard
 James and Susan Hankins
 James Ditto
 James Richards
 Jamie Temple
 Jana Fisher
 Jane Whitaker
 Janet DiPlacido and Julie Smith
 Janet Monsour
 Janetta Bryksin
 Janice A. Kay
 Jasmin Leigh

Jasmine L. Douresseaux
 Jason and Emmie Chen
 Jason Riddell
 Javairia Coleman
 Jay B. Terrell and Sara Hendrix
 JB Pinkston
 Jean and Michael Russ
 Jean Hanson
 Jean Harvey Johnson
 Jean Hee Barrett
 Jeanette Zwartjes
 Jeannie Suh
 Jeff Oden
 Jeff Patelczyk
 Jeffrey and Jennifer Collins
 Jeffrey Cornett and Edward
 Fernandez-Vila, Ph.D.
 Jeffrey Samuels and Amy Levine-
 Samuels
 Jen and Josh Shepherd
 Jen Miller
 Jenn Owens
 Jenna Cooley
 Jennie Law and Liam Grove
 Jennifer and Kyle Hunt
 Jennifer and Rob Thomas
 Jennifer and William Booth
 Jennifer Inman
 Jennifer Lafollette
 Jennifer M. Lee
 Jennifer N. Thompson
 Jennifer Nash
 Jennifer Navas
 Jennifer Radding
 Jennifer Schaeffer
 Jennifer Yoxall
 Jenny Barwick
 Jenny Miller
 Jere Friedman
 Jeri D. Steele
 Jerry Warner
 Jessica Berry
 Jessica Brookins
 Jessica Gibson
 Jessica Pardi
 Jessica Parisi
 Jessica Pehel
 Jessica S. Graham
 Jessica White, Esq.
 Jill Nash Malool and Mark Malool
 Jim Goldstein
 Jim Kerr
 Jim Landon
 Jingjing Ma and Yuan Xu
 Joan Dana
 Joanna Davidovich
 Joaquin and Marcela Davila
 Jody Wren
 Jody-Ann and Daniele Lo Bue
 Joe Magliano
 Joel and Barbara Meyers
 John Bratton and Kelly Fox
 John LaBanca
 John Thigpen
 John W. Turner

Jonathan and Denise Lippert
 Jonathan and Kiran Perkins
 Joseph Edwards
 Joseph McLaughlin
 Joseph Ventura
 Joshua and Ariel Gould
 Joshua Becker
 Joshua Boyd
 Joy Hopen
 Joyce Habra
 Joyce V. Cohen
 Juan Lara
 Judith A. McCoy
 Judith and Stanley Fineman
 Judith Kim and William Chung
 Judy and Doug Hollandsworth
 Judy M. Berry
 Julia B. Mitchener
 Julia Emfinger
 Julia J. Smith
 Julian and Marni Mohr
 Julie Hostetter
 Julie Kimble
 Julie Taymor
 Julie Varnadoe
 Juliet Dong
 Kacy Roseberry
 Kara Guidry
 Kara Havig
 Kara K. Martin
 Kara Short
 Karen A. Freeman
 Karen and Michael Ramps
 Karen Booker
 Karen C. Brim
 Karen Cunliffe
 Karen Friedenbergl
 Karen Jenkins
 Karen Reilly
 Karen Wade
 Karina Hill
 Karla Riker
 Karlie Lahm
 Kate Hodgins
 Katherine Brownwaite
 Katherine Eisenberg
 Katherine Lobe
 Katherine Russo
 Katherine Von Kohorn
 Kathie McClure
 Kathie McFadden and Family
 Kathleen C. Paul
 Kathleen Kulinski
 Kathryn Bryan
 Kathryn Kenimer
 Kathryn L. Truesdell
 Kathryn Miele
 Kathryn Miller
 Kathryn R. Lefebvre
 Kathy Keeley
 Kathy Lisska
 Kathy Mann
 Katie and Ellis Carson
 Katie Boyd
 Katie Byrd

Katie D. Bradford
 Katie Goette
 Katie Jensen
 Katie Logan
 Katie Orr
 Katrina D. Tauchen Wortman and
 Jared Wortman
 Katrina Smith-Paggett
 Katrine Trantham
 Katy Sanders
 Kay and Bob Solomon
 Kelli Grant
 Kelly Hopkins
 Kelly M. Hayden
 Kelly Parker
 Kelly Stevens
 Kelly Willyard
 Ken and Melissa Fineo
 Ken Ueda
 Kenneth Hall
 Kenneth Johnson
 Kenneth Owens
 Keren Morgan
 Keri and Justin Kanitz
 Keri Schieber
 Kevin Kendall
 Kevin T. Taylor
 Keyi Xu Gimpel
 Khristie Perez
 Kim Jackson
 Kim Lehman
 Kim MacQueen
 Kim Spinello
 Kimberly A. Munger
 Kimberly Daniel
 Kimberly Spears
 Kimberly Symons
 Kimberly W. Grant
 Kimberly Wilson
 Kinsey Harper
 Kitzu Muhlhausen
 Kjirsten and Bob Osvold
 Kori Bishop
 Korri Ellis
 Kristen Bernheim
 Kristen Smeby and Rabbi Sebastian
 Jaramillo
 Kristin and Michael Haverty
 Kristin Magee
 Kristin Sargent
 Kristine and David Rudolph
 Krystal Woods
 Kyle and Kristen Loechel
 Kyle Kulakowski
 Kyra Snook
 Lanson Broeker
 Larry and Catherine Brooks
 Larry and Stephanie Hankins
 Lashun Fox
 Latara Johnson-Taylor
 Laura Feyereisen
 Laura Handyside
 Laura Lancaster and Mahan Archer

Laura MacNorlin
 Laura N. Smith
 Laura Poe
 Laura Simmons
 Laura Taylor
 Laura Ulep
 Laurel Berryman
 Lauren Andreason
 Lauren F. Collins
 Lauren Holder
 Lauren Linder
 Lauren Loden
 Laurice Lambert
 Lavona Currie
 Lawren Dentmon
 Leah and Isaac Bear
 Leah Cadray
 Leah Saunders
 Leanna Lee
 Lease Family Philanthropic Fund
 Lee Ann Bonomo
 Leigh E. Walker
 Lem and Carolyn Hewes
 Leonid Finkelstein
 Leslie and Alex Patrick
 Leslie and Philip Graitcer
 Leticia Hodges
 Letitia Richard
 Lettie Cablik
 Libby Moise
 Libo Kim
 Linda Ackerman
 Linda Agnello and Carly Bellard
 Linda B. Doherty
 Linda Bowden
 Linda Brug
 Linda Lam
 Linda M. Whitehurst
 Linde Scott
 Lindsay Backscheider
 Lindsay Bryant
 Lindsay Kidd
 Lindsay Logan
 Lindsey D. Reed
 Lionell Stokes
 Lisa and Patrick Casey
 Lisa C. Douglas
 Lisa Chirico
 Lisa Lauenberg
 Lisa M. Kruse
 Lisa Mapes
 Lisa N. Holcomb
 Lisa Novak
 Lisa R. Parker
 Lisa Serrant
 Lisa Tinter
 Liz Brock
 Liz Lee
 Liza and Roman Pogorelov
 Logan Leslie
 Lorelei Puebla
 Lori Bet and William Brakebill
 Lori Federico
 Lt. Cmdr. Mary E. Frederickson
 Lucinda Bunnan

Lucy Bush and Jeffrey S. Hall
 Luis Maza
 Luis Vazquez
 Lulyanne S. Allgood
 Lydia Wooten
 Lynda Conway
 Lynn and Thomas Giulietti
 Lynn Pettaway
 Lynn Shapiro
 Lynne and Donald Jennings
 Lynne Kuglar
 Lynne Neal
 Madeline and Howell Adams, Jr.
 Madelynn Arnold
 Maggie Anderson
 Mallory Woodward
 Manuel and Cheri Mathews
 Mara Riddle
 Marc and Dayna Straus
 Marcelo and Mariluce DaSilva
 Margaret Briscoe
 Margaret Perry
 Margaret Ross
 Margaret Schack
 Margaret Shearouse
 Margot Berry
 Mari C. Toro
 Maria A. Duque
 Maria Jiram
 Maria Paredes
 Maria Sessions
 Marian Eales
 Marian Harrison-Stephens
 Maribeth Lovegrove and Jean
 Sivilus
 Marie and Michael Capellas
 Marie Edwards
 Marie Guyot
 Mariel and Jeff Borowitz
 Marie-Lies Van Asten
 Marina Parise
 Marisa F. Preston
 Marissa Thourani
 Marivic Beebe
 Mark and Kimberly Knapp
 Mark DeAndrade
 Mark Spain and Shannon O'Neill
 Markus Himmelsbach
 Marla Eastwood
 Marla Ostroff
 Marlene M. Battle
 Marsha Earles
 Martha Littell
 Martha McLain
 Marti Adams
 Mary A. Madaris
 Mary Ann Downey
 Mary C. Golden
 Mary Cowan
 Mary Cox
 Mary Elizabeth F. Hutchison
 Mary Ellen Lockhart
 Mary Katherine Bates
 Mary Moran
 Mary Mustin

Mary Williams
 Maryam Schwegman
 Mary-Kate Starkel
 Matt and Michele Simpson
 Matt Harr
 Matt Ruzicka
 Matthew and Jennifer Ganote
 Matthew and Kate Santore
 Matthew Dudgeon
 Matthew Hammond
 Matthew Klein
 Matthew M. Simon
 Matthew Roberts
 Matthew Rossi
 Maya Mehta
 McKenzie Billings
 MeChelle Smothers
 Meg Blackwood
 Megan Ouzts
 Megan Pankow
 Megan Wilson
 Melba J. Burrell
 Melinda M. Nelson
 Melinda Moseley and Jeffrey Bowie
 Melissa A. Stanley
 Melissa Darlington
 Melissa Davey
 Melissa Glazner
 Melissa Glover
 Melissa J. Derr
 Melissa L. Wood
 Melissa McFaddin
 Melissa Newborn
 Melissa Phillips
 Melissa Sykes
 Melissa Wismer
 Melvin Swoboda
 Meredith A. Lassiter
 Meredith and James Epting
 Meredith Swartz
 Micah Coleman
 Michael A. Ray
 Michael and Gena Jeselnik
 Michael Craig
 Michael Forzano
 Michael Gordon
 Michael Sulpoavar
 Michael Sweeney and Monique
 Reller Sweeney
 Michael Ulliman
 Michael V. Wright
 Michael W. Costello
 Michael Weeman
 Michael Whiting
 Michaela Kendall
 Michele E. Stewart
 Michele Leach Wagner
 Michele Satterlund
 Michelle and Adam Patterson
 Michelle and Ben Ruf
 Michelle Dewey
 Michelle Fernanders
 Michelle Larson
 Michelle Moccia
 Michelle Schweber

Michelle Scott
 Miho Urata and Gennadi Nedvigin
 Mike Landers
 Mike Shema
 Millard Lowry
 Miranda K. Brossett
 Mitchell and Nilam Vaughan
 Mitzi Navarra
 Mitzi Solomon, Esq.
 Moire Menning
 Molly Griffith
 Molly O'Neal
 Molly Strozier
 Monica Schrager
 Monique Sims
 Mr. Alexander Liaugminas and Mrs.
 Laura Jones
 Mr. and Mrs. Albert Anderson
 Mr. and Mrs. Arthur Torres
 Mr. and Mrs. Bill Johnston
 Mr. and Mrs. Bruce Bard
 Mr. and Mrs. Charles Musholt
 Mr. and Mrs. Dan Alford
 Mr. and Mrs. Donovan Bennett
 Mr. and Mrs. Henry M. Meyer
 Mr. and Mrs. Jason Wright
 Mr. and Mrs. Jeff Goran
 Mr. and Mrs. John Beene
 Mr. and Mrs. Johnny Ahn
 Mr. and Mrs. Michael Morris
 Mr. and Mrs. Rhett White
 Mr. and Mrs. Richard Valladares
 Mr. and Mrs. Rick Higgins
 Mr. and Mrs. Robert Hoskyn
 Mr. and Mrs. Thomas C. Benedict
 Mr. and Mrs. Tim Kelly
 Mr. and Ms. Euriah Bennett
 Mr. David Sawyer
 Mr. Doug Stoner
 Mr. J. Barry Schrenk
 Mr. Jeffrey Scott Burk
 Mr. Justin Brent
 Mr. Lawrence S. Mirkin
 Mr. Luis R. Hernandez, Jr.
 Mr. Mark E. Brown
 Mr. William King
 Mr. William Stephens
 Mrs. and Mr. Tami Mace
 Mrs. Mary Jo Arnoldi and Mr. Craig
 Subler
 Mrs. Vicki S. Morris
 Ms. Ann Durham
 Ms. Anne Jessamyn Kuhns
 Ms. Barbara Beard
 Ms. Christina L. Byrnes
 Ms. Heidi Wilenius
 Ms. Holly Sims
 Ms. Janet Franco
 Ms. Judy Morris Lampert
 Ms. Karolina Abbott
 Ms. Lauren Burke
 Ms. Linda Van Leer
 Ms. Mandy Mobley Li
 Ms. Sarah Massey
 Ms. Sue Wallace

Ms. Wendy Gardner
 Nabeel and Farah Hafeez
 Naidu Yelisetty
 Najeeb and Millie Muhaimin
 Nakia Echols
 Nancy and William Adams
 Nancy B. Carithers
 Nancy Barnhill
 Nancy D. Almquist
 Nancy Everhart
 Nancy Francis
 Nancy Halsema
 Nancy J. Koutnik
 Nancy R. Childers
 Nancy Taylor
 Narsaunika Graham
 Natalie Brane
 Nathalia Hernandez-Vidal
 Nathan Hayes
 Nathan P. Corbitt
 Nathan Rall
 Navarro Wright
 Neely Sood
 Nena K. Madonia
 Nicholas Barnett
 Nicolas Amortegui
 Nicole Delone
 Nicole Lynch
 Nitasha Burney-Fleming
 Noah Osher
 Noel Banford
 Noreen Enriquez
 Nza Branton
 Octavia Raheem
 Odile Basarich
 Olabisi Thompson
 Olga Rodriguez and Sandra P.
 Rodriguez
 Olga Taran
 Olivia Brookshire
 Omer Ari
 Ora Douglass
 Owen Funkhouser
 Pam Beckerman
 Pamela C. Campbell
 Pamela Weagley
 Paras Shah
 Pascael Beaudette
 Patrice and Joseph Lorence
 Patricia Leahu
 Patricia Schossler
 Patrick and Kristen Lowther
 Patrick Long
 Patrick Walker
 Patty C. Brezina
 Paul Kasicki
 Paul Rier
 Paulette Juieng
 Pauline Hale
 Pavithra Hickey
 Peggy Holman
 Peggy Martin
 Peggy Millinor
 Pete Weissman
 Peter Linz

Peyton Williams
 Phyllis Cohen
 Phyllis Silverstein
 Qiana Johnson
 Rachel and Jeremy Monroe
 Rachel Meyer
 Rachel Riley
 Rachel Rowe
 Rachel Rumsey
 Rachel Smith
 Rachel Wynia
 Ramonia Corhen
 Randy and Liberty Hall
 Rebecca Acree
 Rebecca Anderson
 Rebecca Arnold
 Rebecca Bailey
 Rebecca Goldman
 Rebecca Harrell
 Rebecca Jackson
 Rebecca L. Harrison
 Rebecca Puccetti
 Rebecca T. Grogan
 Rebekah and Barry Arnson
 Regina E. Graham
 Reginald Taylor
 Reverend Elizabeth L. Edwards
 Rex R. Veal
 Richard and Lana Krebs
 Richard Kamulda
 Richard Staughton
 Rick and Kathleen Penn
 Ridgely Fisk-Green
 Ridwan Rahman
 Rita Saini
 Robert and Betty Edge
 Robert Boone
 Robert D. Turner
 Robert Lamb and Bonnie Heath
 Robert Miller
 Robin Copeland
 Robin Gutierrez
 Robin King
 Robin Shetler and Mark Trojanowski
 Robyn and Rob Dillow
 Robyn Bethea
 Robyn McLean
 Robyn Sjogren
 Robyn Winnick
 Rodolfo Galindo
 Roger and Sandra Shortridge
 Roland and Sarah Laniel
 Roman Gorokhov
 Rome Brumfield
 Ronni Solomon
 Ronnie Lowry
 Ros McLean
 Roselyn Kahn
 c Rosemary Gallagher
 Roxann and Jason Arnold
 Ruth E. Trulock Carter
 Ryan and Elizabeth Lewis
 Ryan Crisel and Joy Hsu

Ryan Hart
 Ryan Neucollins
 Ryan Vidal
 Ryan Whitworth
 Sabina Margeton
 Saidah Carter
 Sakshi Narayan
 Sally A. Dorn
 Sally Alcock
 Sally and Mel Westmoreland
 Sally B. Rhoden
 Samantha A. McMahan
 Samantha Vejay
 Samata Kamireddy
 Samirah Raheem
 Sande Baumann
 Sandra and James Anderson
 Sandra Cohen Hennessy
 Sandra Gallahar
 Sandra Granade
 Sandra Pak
 Sandy Gaines Wood
 Santiago Saucedo
 Sara Adler
 Sara and George Branch
 Sara Herndon
 Sara Levy
 Sara Van Etten and Jon Athey
 Sarah and Andy Jones
 Sarah and Scott Wood
 Sarah and Steven Aufdenkampe
 Sarah Austin
 Sarah Baker
 Sarah Baumhoff
 Sarah Brown
 Sarah Combs
 Sarah D. Simons
 Sarah Heurich
 Sarah K. Bryant and Joseph B. Shiffler
 Sarah Kirkpatrick
 Sarah Miklavcic
 Sarah Rogers
 Saratan Farrer
 Sasha Hatfield
 Schwab Charitable Fund
 Scott and Connie MacKenzie
 Scott M. Hollis
 Scott Newman
 Sean Martin
 Sean P. Whitaker and Dionne Plantamura
 Seth Goodman
 Seth R. Trotz
 Shana and Matt Smith
 Shannon and Adam Nowlan
 Shanny Burge
 Shari M. Graham
 Sharon and Daniel English
 Sharon Foster
 Sharon P. Baker
 Sharon Parker
 Sharon R. Harmon
 Sheila D. Williams
 Sheila M. Waterman

Sherica Rosser
 Sherlandra D. Frink
 Sheron Hayes and Mirko Marweg
 Sheryl Edwards
 Simone Gray
 Snigdha Vallabhaneni
 Sonia Freeman
 Sonia Granados
 Sonya Freeman-Moss
 Sook Stirling
 Sophia B. Peterman
 Sophia Hussen
 Soyoun Kim
 Stacey and Andrew Evans
 Stacey Demartini
 Stacey Kaufman
 Staci Brinson
 Stacy Bradfield
 Stacy McAllister
 Stacy Ulmer
 Stanton and Courtney Stafford
 Stefanie Mayr
 Steph A. Gaudin
 Stephanie B. Callaway
 Stephanie Cooper
 Stephanie Hagen
 Stephanie Kisielewicz
 Stephanie Parker
 Stephanie R. Parrott
 Stephanie Wise
 Stephen Chenney
 Stephen Stuk
 Steve Worthington and Linda King
 Steven W. Houlder
 Sue Belknap
 Sue Ellen Wortzel
 Suraj and Kelly Palakshappa
 Susan B. Clark
 Susan Barry
 Susan Brake
 Susan Bravman
 Susan D. Kahn
 Susan Jacobs
 Susan Jones and Dan Clark
 Susan L. Big
 Susan M. Milne
 Susan Rhatigan
 Susan Somach
 Susie Pyun
 Suzanne Ezell
 Suzanne Girdner
 Suzanne Griswold
 Suzanne L. Dunn
 Suzanne T. Heninger
 Suzette Kinsey
 Suzette R. Lorenzana
 Suzy B. Holloway
 Sylvia Seaver
 Tabitha Aberts
 Tamara Ellerbe
 Tamara Miller
 Tamara Sclafani
 Tamika Guiton
 Tamika Lang
 Tammy Gustafsson

Tana Jo
 Tanya Nikolova
 Tara Cochran
 Tara Sears
 Taylor M. Coppock
 Tennyson Mesquitte
 Teresa Dau and Dr. Amanda L. McMillan
 Teresa Lo
 Teresa Sluder
 Terri Stockman
 Thea Dayringer
 Thelma Crowley
 Thena Durham
 Therese Aun and Lorna Gentry
 Thom and Lori Stanley
 Thomas and Catherine Mew
 Thomas and Linda Ratliff
 Thomas Philipose
 Thomas Rockwood
 Tiffany Hamilton
 Tiffany Lempesis
 Tim O'Shea
 Todd and Amanda Evans
 Todd Lindsey
 Todd M. Williams
 Toi Sampson
 Tom and Pam Rosenberg
 Tom Cole
 Tracey Brown
 Tracey Dodge
 Traci Pitts
 Tracie Smith
 Trisha Parker
 Troy Jenkins
 Troy Kiber
 Tzuying Chu
 Umber and Umair Kamal
 Umut Er
 Vandt and Harry White
 Vanessa Warner

Vanya Foote
 Vera M. Dang
 Veronica Lisenbee
 Vicki Armstrong
 Vicki Holt
 Vicki Mabrey
 Vicki Whorton
 Vicky Tettelbach
 Victoria Lansford
 Vikki Oliphant
 Vikram R. Reddy
 Virginia Brown
 Virginia DeBrosse
 Virginia Jeffries
 Virginia Mahotiere
 Vladimir Yampolsky
 Walt Stadnisky
 Walter Bell
 Wanda Davis
 Wanda Irving
 Wanda Scott
 Wendy S. Stengel
 Wendy T. Mobley
 Whitney and Theodore Woodward
 William and Jane Medbery
 William and Julia Rodenbeck
 William and Lucy Vance
 William and Stephanie Holby
 William Baas
 William D. Smith
 William Daniels
 William F. Snyder
 William G. Nemeth and Merry Brodie
 Yao Chen
 Yavane Stubbs
 Yuan Tian
 Yulia Carroll
 Zariah Butler
 Zayda Forero

In-Kind Donors

Alice Wallace
 Arnall Golden Gregory LLP
 BRAVE Public Relations
 Caroly Wilcox and Frank Misiurski
 Center for Puppetry Arts
 Digital Arts Studio
 Growl
 Jeffrey Cornett and Dr. Edward Fernandez-Vila
 Karen Portaleo
 Kathleen Fortin
 Kathy Littlefield
 Leapfrog Services, Inc.
 Lee Bryan
 Margo Brinton, Ph.D. and Eldon Park
 Mr. Joseph Emory
 Papa John's Pizza at Georgia Tech

Paula Falocco
 Penguin Random House
 Publix Super Markets Charities
 Renaissance Atlanta Midtown Hotel
 Tamera Josephson
 The Coca-Cola Company
 The Junior League of Atlanta, Inc.
 Thom and Lori Stanley
 Wabe FM 90.1
 WarnerMedia
 WSB-TV Family 2 Family Project
 Northside Hospital
 Delta Community Credit Union
 Kroger
 American Signature Furniture

Matching Gift Companies

Google Matching Gifts Program
Microsoft Matching Gifts Program
Once For All Trust
Stanley Black & Decker

The Coca-Cola Foundation Matching Gift Center
The Sartain Lanier Family Foundation
Vertex Pharmaceuticals

In Honor Of:

Alyssa, Randall, and Zadie James
Michael Isham and Donald Gauld

Beth Schiavo
Dana Matsushita
Erin and Josh Morris
Patrick Walker
Deborah Kliing
Tamara Ellerbe
Rebecca Arnold
Samantha Vejay
Mr. and Mrs. Charles Musholt

Carol & Rob Van Leer
Ms. Linda Van Leer

Center for Puppetry Arts Wonderful & Hardworking Staff
& Volunteers
Yee Family Charitable Fund

Daughter Dr. Jennifer Palmer, and her family: David Lee,
Henry, and Bengi
Mary Palmer Family Foundation

Education
Nicolas Amortegui

Harry Cook
AT&T Charity Rewards

John Ezell
AT&T Charity Rewards

Judy and Ed Garland
Lubo Fund
Ms. Judy Morris Lampert
The J. Donald Childress Foundation

Nancy Staub
Bradford Clark

Vince Anthony and Barb
Lubo Fund
Elizabeth E. Smalley and Stephen P. Young
Beth and Edward Sugarman
Charles Loridans Foundation, Inc.

Zadie James
Ms. Anne Jessamyn Kuhns

In Memory Of:

Betty B. Stephens
Margo Brinton, Ph.D. and Eldon Park
Nancy B. Carithers
Mr. William Stephens

Bobby Box
Mr. Mark E. Brown

Gay Love
Dellmer B. Seitter
Margo Brinton, Ph.D. and Eldon Park
Nathan P. Corbitt
Ellis Fund
Lavona Currie

Jack St. George
Alan Keene
Kathryn L. Truesdell
Christy Price
Michael Ulliman

Martha 'Mot' Dinos
Anonymous
Laura Taylor

Maxine Nash
Anonymous

Zavella Jacobson
Bonnie Jacobson

2019-2020

Board of Directors & Advisors

Officers & Executive Committee of the Board of Directors

Allen W. Yee, Chairman | The Coca-Cola Company
R. Michael Dunlap, Treasurer | Renasant Bank
Jeffrey Blake, Secretary | Merchant & Gould
John T. Chandler, Jr. | Equifax Inc. (Retired)
Anne L. Cross | Bank of America Merrill Lynch

Board of Directors

Jeffrey Blake | Merchant & Gould
Margo A. Brinton, Ph.D. | Georgia State University
Edward Cadagin | Arnall Golden Gregory, LLP
John T. Chandler, Jr. | Equifax Inc. (Retired)
Anne L. Cross | Bank of America Merrill Lynch
R. Michael Dunlap | Renasant Bank
Deborah Hicks Ellis | Community Volunteer
J. Cameron Hardin | Georgia Power Company
Cheryl Henson | The Jim Henson Foundation
Susan Pease Langford | Butler Snow, LLP
Vir Nanda | Community Volunteer
Russ Owen | Fifth Third Bank
Kristi Patterson | Bentley Systems
Matthew Pritchard | Google
Mary Lynn Realff | Georgia Institute of Technology
Mrs. H. Bronson Smith | Community Volunteer
Dana Sugar | PNC Bank
Allen W. Yee | The Coca-Cola Company

Advisors

Robert H. Barnett | Conway MacKenzie
Christopher J. Chan | Sutherland
Katharene J. Garland | Community Volunteer
Diane K. Gray | Lyan & Associates
Lo Li Carper | Equifax, Inc.
Becky Riley | Northgate Arinso
Anne Taetle | Community Volunteer
Annie-York Trujillo | Community Volunteer
Rasmus Wegener, Ph.D. | Bain & Company, Inc.