

CENTER FOR
PUPPETRY
Arts[®]

2021–2022

Spring Season

Rethink
Everything
You Know
About
Puppetry



Thank You!

To the Center's current
major donors and sponsors:

LETTIE PATE EVANS FOUNDATION



David, Helen and Marian Woodward Fund

THE ARTHUR M. BLANK
FAMILY FOUNDATION



FULTON COUNTY
ARTS & CULTURE

WarnerMedia



THE ZEIST FOUNDATION, INC.

The Jane Henson Foundation

In Memory of Betty B. Stephens by Pike Stephens, Press Stephens and Sally Stephens Westmoreland



MAYOR'S OFFICE OF
CULTURAL AFFAIRS

THE SARA GILES MOORE
FOUNDATION

Anonymous

Kathy Waller

The Fraser-Parker Foundation

Charles Loridans Foundation, Inc.



Georgia Power
Foundation

NATIONAL
ENDOWMENT OF THE ARTS



The George M. Brown Trust Fund of Atlanta
Frances and Beverly DuBose Foundation
Deborah Hicks Ellis

Lisa Henson

The Gay and Erskine Love Foundation, Inc.

The LuluMa Foundation
Macy's Atlanta

Ida Alice Ryan Charitable Trust

Mr. and Mrs. H. Bronson Smith

The Whitcomb Family Foundation, Inc.



Arnall
Golden
Gregory LLP

Attorneys at Law

Anonymous

For a more comprehensive list of donors and sponsors, please visit puppet.org.

Center for Puppetry Arts is a non-profit, 501(c)(3) organization and is supported in part by contributions from corporations, foundations, government agencies, and individuals. The Center is a member of Theatre for Young Audiences (TYA/USA/ASSITEJ). The Center also serves as headquarters for UNIMA-USA, the American branch of Union Internationale de la Marionnette, the international puppetry organization.

All information contained herein is subject to change. Please check puppet.org for the most up-to-date programming and pricing.

On the cover: from *Chimpanzee*, photo by Richard Termine

It's time to fall in love with puppetry again!

Our spring season welcomes stage adaptations of award-winning, best-selling children's books and classic literature, a critically-acclaimed adult puppet performance, and new experimental works for adults. In addition to our performance offerings, the Center invites you to immerse yourself in our new museum programming, workshops, and special events this spring. For all of our activities at the Center, we continue to focus on your safety and well-being with our newly updated HVAC systems with ionization in our mainstage theater, frequent cleanings, and the requirement of masks by all employees.

Our Family Series in-person performances continue with *The Snowy Day and Other Stories*, *Click, Clack, Moo: Cows that Type*, *Pete the Cat*, and *The Wizard of Oz*. This celebration of children's literature is sure to engage young audiences and their families..

STEM Adventure Days are back this season! Join us for an afternoon of STEM magic with a puppet show, a special Museum tour, a customized Create-A-Puppet Workshop™, with an added post-show presentation that connects programming throughout the Center with STEM-based curriculum.

If distance limits your ability to visit the Center in person, we are happy to come to your classroom or your living room with our in-person or virtual outreach programming. In addition to our classroom virtual programming, our Online Puppet Playdates will be offered every third Saturday of the month to families in the comfort of their homes. These Playdates provide a unique experience beyond the screen, with interactive play and puppet-building opportunities. Make sure to follow us on your favorite social channels to see the latest. We hope to see you soon!



PUPPET.ORG • 404.873.3391



Beth Schiavo
Executive Director

Family Series Performances	3
New Directions Series for Adults & Teens Performances	6
Museum Exhibitions, & Programming	9
Museum Store	12
Education Programming	13
Digital Learning	15
Group Trip Guidelines	19
Membership Information	20
Plan Your Visit	21

Performances

Family Series

Pricing

Prices vary by production, date, and show time. Group pricing is available.

Go to **PUPPET.ORG** or call **404.873.3391** for more information.

Enhance your Experience!

Get a Center ticket to enjoy a Family Series performance, a Create-A-Puppet Workshop™ and admission to the *Worlds of Puppetry Museum*.

(See pages 17 and 25 for details.)



photo by Travis Young



Rudolph the Red-Nosed Reindeer
and all related elements © & ™
under license to Character Arts, LLC.
All rights reserved.

Clay Walker

Rudolph the Red-Nosed Reindeer™

Based on the Classic Television Special

Adapted by Jon Ludwig

Now—Jan 2, 2021

Tues—Sun

No shows Dec 25, & Jan 1

Recommended for Ages 4 & Up

Rudolph soars back into town for the wonderful holiday tale that speaks to the misfit in all of us! Based on the classic television special, it's become an Atlanta tradition.

Themes: Anti-bullying, seasons/winter holidays, polar habitat

Puppetry Styles: Blacklight, Body, Rod

Create-A-Puppet™: *Rudolph the Red-Nosed Reindeer™* Shadow Puppet



Travis Young

The Snowy Day and Other Stories by Ezra Jack Keats

By Mesner Puppet Theater of Kansas City, MO

Adapted by Jerome Hairston

Based on the Caldecott Award-winning book by Ezra Jack Keats

Produced by special arrangement with Plays for Young Audiences

Jan 14—30, 2022

Thurs—Sun

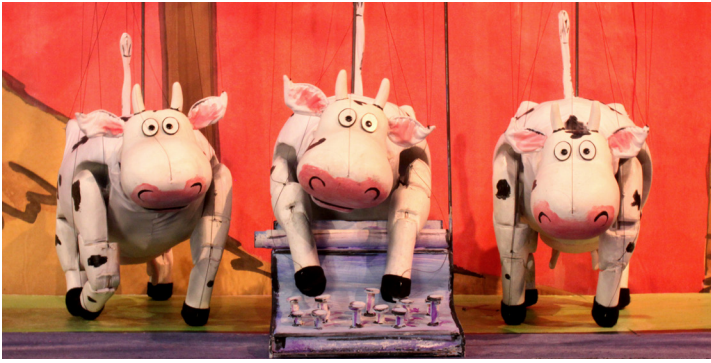
Recommended for Ages 4 & Up

Follow Peter and his friends as they romp and play, starting snow ball fights and making snow angels in this uplifting musical play about childhood joys and living life to the fullest each day.

Themes: Seasons/winter, cause and effect, persistence, imagination

Puppetry Styles: Glove, Rod

Create-A-Puppet™: Delightful Dog Hand Puppet



*Athenum Books for Young Readers/
Simon & Schuster, 2000 Used with
permission of Pippin Properties, Inc.*

Center for Puppetry Arts

Click, Clack, Moo: Cows that Type

Based on the book by Doreen Cronin with illustrations by Betsy Lewin

Adapted and directed by Jon Ludwig

Feb 2–Mar 13, 2022

Thurs–Sun

Reduced-Price Previews Feb 2 & 3

Recommended for Ages 4 & Up

Cows that type? Chickens on strike?? Farmer Brown can't believe his ears! Join the barnyard fun in this adaptation of the award-winning children's book.

Themes: Farming, compromise, barnyard animals

Puppetry Styles: Marionette, Rod, Shadow

Create-A-Puppet™: Click, Clack, Cow Hand Puppet



Frisch Marionettes

The Wizard of Oz

By Frisch Marionettes of Cincinnati, OH

Mar 18–Apr 3, 2022

Fri–Sun

Recommended for Ages 4 & Up

Celebrate America's rich musical heritage as you travel down the Yellow Brick Road with Dorothy to find out why a Lion, Tinman and Strawman are all singing the blues.

Themes: Blues music, friendship, diversity, literature

Puppetry Styles: Marionette

Create-A-Puppet™: Trusty Toto Marionette



Chris Hunt

Pete the Cat by
Kim and James Dean
© James Dean 1999, 2010

Pete the Cat is a registered
trademark of Pete the Cat, LLC

Pete the Cat

Based on the award-winning book series by Kim and James Dean

Adapted by Jon Ludwig and Jason Hines

Apr 7–May 29, 2022

Fri–Sun

Reduced-Price Preview Apr 5

No shows April 17

Recommended for Ages 4 & Up

This show is a groovy adventure of one cool, skateboarding, surfing, rocking blue cat and his fine friends. Based on the *New York Times* Best Seller series.

Themes: Emotions, celebrating differences, animals, music

Puppetry Styles: Rod

Create-A-Puppet™: Pete the Cat Hand Puppet

We also offer Sensory-Friendly Programming!

Guests with sensory sensitivities (such as Autism Spectrum Disorder) and other developmental differences are invited to experience the Center for Puppetry Arts in a relaxed and judgment-free setting, supported by specially-trained staff members and surrounded by resources to make the day comfortable and successful!

See page 11 for more information.



Performances

New Directions Series for Adults & Teens

Pricing

Prices vary by production, date, and show time.

Tickets include Museum admission prior to show time.

For tickets, go to **PUPPET.ORG** or call **404.873.3391**.

Beer & Wine Bar

Bar open one hour before evening shows and during intermissions.



From *Under the Sea* by Matt McGee
photo by Stephanie Richardson



Richard Termine

Chimpanzee

By Nick Lehane of New York, NY

Apr 8–10, 2022

Fri–Sun

Ages 13 & Up

Chimpanzee is an hour in a theater, a day in a biomedical facility, and a lifetime in the mind of a chimpanzee.

“gorgeous puppet play...a meticulous, deeply felt nonverbal memory play.”

–New York Magazine



From *Dragonfire* by Jennifer Hines
photo by Stephanie Richardson

Xperimental Puppetry Theater (XPT)

By Various Artists

May 12–15, 2022

Thurs–Sun

Ages 18 & Up

Every year, dozens of artists come together in Xperimental Puppetry Theater (XPT), a program that offers professional and emerging artists the opportunity to explore and experiment, creating original and bold puppet theater guaranteed to inspire and surprise adult audiences. Join us for an artist talk-back following every performance.

Submit a show to XPT 2022!

Submit an idea for a puppet show, a short puppet film, or a puppetry-themed installation! Applications will be due in January 2022.

Project proposals, information and applications are available at **PUPPET.ORG**



Museum Exhibitions & Programming

Worlds of Puppetry Museum

Pricing—Museum is free for Members!

Prices vary by activity, date, and time. Go to **PUPPET.ORG** or call **404.873.3391** for more information.

Museum Hours

Tue-Sat: 10am–5pm Closed Mondays
Sun: 12noon–5pm & major holidays
Extended hours during evening events.



Sara Hannah

Signature Exhibition

Jim Henson Collection Gallery

This interactive exhibition follows Jim Henson's prolific imagination chronologically, transporting visitors through environments that typified the master puppeteer's world, such as Jim's Office, the Muppet Workshop, and the Television Studio.

In addition to learning how Henson's characters came to life and are still performed, visitors can view iconic puppets such as Kermit the Frog and Miss Piggy, characters from *Sesame Street* and *Fraggle Rock*, and puppets from Jim Henson's fantasy films *Labyrinth* and *The Dark Crystal*.



Sara Hannah

Signature Exhibition

Global Collection Gallery

The Global Collection celebrates puppetry traditions in major cultures from around the world. Highlighting the history of puppetry in Asia, Africa, Europe, and the Americas, this collection demonstrates the shared use of the art form as a teaching, communication, and entertainment tool.

Organized by continent, artifacts are on exhibit with rich, contextual backdrops, and hands-on interactives to encourage play and learning.

Special Exhibitions

PERFORMANCES

/

MUSEUM

/

EDUCATION

/

GROUP TRIPS

/

STUFF TO KNOW



Tarish Pipkins

NEW SERIES

Puppetry NOW featuring Jeghetto

Dean DuBose Smith Special Exhibition Gallery
June 9–Sept 25

Puppetry NOW turns the museum's focus to the art of our time and artists with limited representation in our historical collections. Through an annual solo exhibition and collecting efforts, the initiative provides space and support to puppeteers and artists of color, while also increasing the museum's connection to the current state of the art form. The first year of this series will spotlight artist and master of puppetry Tarish Pipkins known as Jeghetto.



Clay Walker

NEW SERIES

Pop-Ups in the Atrium

Love Family Atrium

Come see something new in atrium this season. From past productions to new acquisitions, annual commemorations to deep dives into stories you know, we will be spotlighting something fun every couple of months!

A Look Back at the Center: Ruth and the Green Book 2012

Feb 1–Mar 27

I Love Pete the Cat!

Apr 5–May 29

New Museum Collections

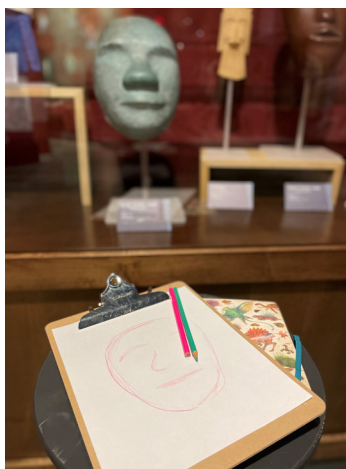
June 7–July 31

Museum Exhibitions & Programming

Programs & Events

Museum Programs Are Coming Back!

Keep an eye on our calendar as we launch some new programs and bring back old favorites.



Center for Puppetry Arts

Sketchbook Saturdays

Starting in February, join us for the first Saturday in every month to get your creativity flowing. Bring your sketchbook and some pencils, grab a stool, and draw a puppet from the museum collections. Pin up your drawing for visitors to admire. Artists of all skill levels and ages welcome.

Museum admission required.

Feb 5

Mar 5

Apr 2

May 7

June 4



Center for Puppetry Arts

Winter/Spring 2022 Puppet Runway Show

Puppetry can be high fashion. Dress up in some puppetry-inspired duds or channel your favorite popular culture puppet and join us to walk the museum runway.

Museum admission required.

March 12

5:30pm–7:30pm

Check Out Our Store!

Museum Store Hours

Thurs–Fri: 9am–5pm

Sat: 10am–5pm

Sun: 12noon–5pm

Closed Mondays
& major holidays.



Center for Puppetry Arts

The Center for Puppetry Arts' Store is filled with unique and educational gifts for all ages. Choose from a wide array of puppets, craft kits, books, and artist-made products. It is the perfect spot to find something unique for yourself or a friend. Center Members always get 10% off in the store!

Your purchases help support the Center's operations year-round.

Merchandise includes:

- Gifts featuring your favorite Henson properties
- Unique puppets of all sizes and types
- Creative toys and activity kits
- Center for Puppetry Arts souvenirs
- Seasonal merchandise



Education

Programming

Educational offerings for all ages and all experience levels at our place or yours!

Contact EDUCATION@PUPPET.ORG or visit PUPPET.ORG/EDUCATORS to find out more!



Center for Puppetry Arts

STEM Adventure Days

Join us for an afternoon of STEM magic with a puppet show, a special Museum tour, a customized Create-A-Puppet Workshop™, and a unique post-show presentation that connects all areas of the Center with areas of curriculum and learning.

Dates for Spring 2022

Sun, Mar 6, 2022 *Click, Clack Moo: Cows that Type*

Sun, Apr 24, 2022 *Pete the Cat*



Center for Puppetry Arts

Sensory-Friendly Programming



Guests with sensory sensitivities (such as Autism Spectrum Disorder) and other developmental differences are invited to experience the Center for Puppetry Arts in a comfortable and judgment-free setting, supported by specially-trained staff members. Each component of the Center's programming is modified to reduce sensory stimuli. Sound-reducing headphones, light-reducing sunglasses, fidget toys, and social stories are available upon request, too.

Dates for Spring 2022

Sun, Feb 27, 2022 *Click, Clack Moo: Cows that Type*

Sun, May 15, 2022 *Pete the Cat*



Center for Puppetry Arts

Discovery Days

Come to the Center for Puppetry Arts and celebrate puppetry traditions in other cultures through intimate, interactive programs that celebrate Africa, The Americas, Asia or Europe. Activities include From Story to Stage (a storytelling-with-puppets performance), Puppet Creation Station (a puppet-building workshop), the Discovery Puppetry Cart (a hands-on cultural celebration) and self-guided Museum exhibits. Suggested for ages 9-14. These programs are booked on demand for groups of 10 or more.

Visit PUPPET.ORG to submit your request form and secure a date (or to find out more)!



Center for Puppetry Arts

Create-A-Puppet Workshops™

Tues–Sun
Ages 4 & Up

Become a puppet maker and puppeteer as you create your own puppet, perform with it on our classroom stage, and then take it with you to continue the fun at home.

Create-A-Puppet Workshops are also available as an instructor-led experience featuring an exciting curriculum-based learning activity (perfect for school groups). If you are unable to participate in the workshop in person, grab a to-go kit that includes detailed instructions and a link to a video tutorial.



Center for Puppetry Arts

Outreach Programs

The Center for Puppetry Arts would be delighted to bring puppetry magic to your school, library, community center, board room or special event through a wide variety of in-person Outreach Programs! Programs can be customized to support any curriculum, audience, experience level or age group. Visit our website to submit your request form and secure a date (or to find out more)!

- Artist-in-Residence Experience
- International Puppetry Presentation
- Preschool Puppetry Playshops
- Private Lessons
- Puppet Construction & More
- Puppet Factory
- Puppet Manipulation 101
- Puppet & Team Building Workshop
- Puppetry as Theatre Art
- Teacher Professional Development Workshop

Education

Digital Learning

Pricing

For details and pricing, visit PUPPET.ORG/EDUCATORS

Scheduling

To schedule your program, call **404.881.5117** or email DIGITALLEARNING@PUPPET.ORG



**In Georgia and around the world,
the Center for Puppetry Arts is
here for you—*virtually*.**



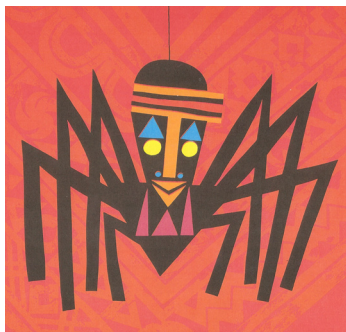
Robert Jensen

The Center for Puppetry Arts' award-winning Digital Learning team has become an essential teaching tool for many. With more than 20+ years in the field of distance learning, the team offers a huge variety of purpose-built, interactive, curriculum-based programming.

Now in all 50 states and nearly 90 countries, the Digital Learning team is expanding its reach and its programming.

Curriculum-Based Workshops

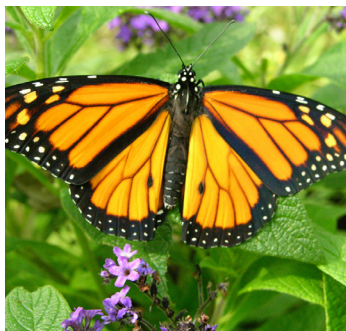
Our workshops are live, dynamic, and completely interactive. We will provide you with a study guide and list of puppet-making materials to ensure your workshop is educational and entertaining. We offer curriculum-based workshops on a wide range of topics. Below are just a few examples of the many digital workshops that are available. These workshops are available on demand. Book whenever it's convenient for you and your group.



Gerald McDermott

Anansi the Spider: A West African Folktale

Learn about trickster tales and the origin of Anansi the Spider. In this hands-on interactive lesson, students use pictures, movement, and music to retell the story of *Anansi the Spider* by Gerald McDermott. Students watch the African folktale Anansi and Sister Mud Turtle come to life with a shadow puppet show performed by Center staff. Students then compare "food cousins" from West Africa and the U.S. The workshop culminates with a puppet-making activity where students make an Anansi puppet of their very own.



Center for Puppetry Arts

Butterflies

Learn about the lifecycle of the butterfly, what makes a butterfly an insect, and its coloring and camouflage through this interactive Video Conference. Participants will learn while making their very own butterfly rod puppet. Photographs of the different stages in the life of a butterfly are included. This is a great arts and science lesson all in one!

Modified puppet design available for Pre-K.



Center for Puppetry Arts

Tropical Rainforest

Students participate in learning activities about the location of tropical rainforests, their relationship to the equator and tropic lines, various animals found in the rainforest and the different layers/strata. The roles of birds in the South American rainforest will be discussed as well.

Students will construct a flying Tropical Bird Rod Puppet.

Live, Interactive Puppet Shows

We offer a variety of live, interactive puppet shows. From the classics to original works, these performances are custom-created to engage, entertain, and educate. Below are a few examples. These puppet shows are available on demand, book whenever it's convenient for you and your group.



Center for Puppetry Arts

Interactive Puppet Show **Aesop's Fantastical Fables!**

Set in Ancient Greece, *Aesop's Fantastical Fables!* will tell the story of a servant Aesop and his sidekick Cecil the Lion who share with the audience the stories Aesop has created, using puppets. Aesop tells three classic tales, The Lion and the Mouse, The Boy who cried Wolf and The Tortoise and the Hare, encouraging the audience to participate in this very interactive puppet show.



Center for Puppetry Arts

Interactive Puppet Show **Mr. Kolache's Long List**

Join Mr. Kolache (hand puppet), a Czech pastry, and his dog Baklava (hand puppet) on a "movin and groovin'" adventure both inside and outside the grocery store in which they live. When Mr. Kolache is faced with an overwhelming list of tasks and lack of energy, students (K-2) come to his assistance by helping him make choices about eating healthy snacks and staying active.

"My kids did not know what to expect and they were absolutely TRANSFIXED the whole time!!"



Online Puppet Playdates

On every third Saturday, the Center's Digital Learning team will be presenting online, interactive puppet shows and workshops for individuals and families. Our digital programming is not just for groups anymore!



Center for Puppetry Arts

Online Puppet Playdate Mr. Kolache's Long List

Sat, Jan 15, 2021, 10am EDT



Gerald McDermott

Online Puppet Playdate Anansi the Spider: A West African Folktale

Sat, Feb 19, 10am EDT



Center for Puppetry Arts

Online Puppet Playdate Aesop's Fantastical Fables!

Sat, Mar 19, 10am EDT



Center for Puppetry Arts

Online Puppet Playdate The Velveteen Rabbit

Sat, Apr 16, 10am EDT



Center for Puppetry Arts

Online Puppet Playdate The Little Red Hen & the Grain of Wheat

Sat, May 21, 10am EDT

Group Trips

Field Trip and Sales Guidelines

Please read these tips carefully as they include important information on how to make a group reservation and points to keep in mind when calling to reserve tickets.

To schedule your group trip, call the Ticket Sales Office at 404.873.3391.

Schedule your group trip as soon as possible; our events may sell out quickly. Determine which activity you want to book, the date and time you wish to attend, and the number of seats needed. Have first and second choices for dates and times in case your first choice is unavailable. Also, check your organization's calendar to avoid conflicts with holidays, testing, etc. While we can easily accommodate large groups, we may have to break them into smaller segments to optimize the group experience.

All patrons who enter the premises, including chaperones and bus drivers, must have a ticket.

Tues-Fri: 9am–5pm

Sat: 10am–5pm

Sun: 12pm–5pm Closed holidays.

Ticket Sales hours subject to change.

Group Itineraries

We will do our best to customize your trip to suit your needs. Event times are subject to change; check **PUPPET.ORG** for exact times on your preferred date.

A sample weekday morning schedule:

10:00am Performance

11:00am Lunchroom

11:30am Create-A-Puppet Workshop™
or Museum Guided Tour

12:30pm Museum General Admission

A sample weekday afternoon schedule:

4:00pm Self-Guided Museum Admission*
OR

Add a customized Education Workshop

For information, contact us at
EDUCATION@PUPPET.ORG

*Self-Guided Museum Entry is available Tuesday–Sunday.
(Last admission at 4:15pm.)

Become a Member!

Becoming a Member at the Center for Puppetry Arts gets you exclusive perks and helps provide tickets for children who might not otherwise have the opportunity to experience the Center.

Support the arts, support your community, and get great discounts and free stuff! Plus, a portion of your Membership may be tax-deductible. Awesome, right?

3 Easy Ways To Make It Happen:

By Web

Visit

[puppet.org/visit/
become-a-member](http://puppet.org/visit/become-a-member)

By Phone

Call the Ticket Sales Office at

404.873.3391

Wednesdays through Sundays

In Person

Visit the Ticket Sales Office!

Tues–Fri: 9am–5pm

Sat: 10am–5pm

Sun: 12noon–5pm

Closed holidays

All Memberships are valid for one year from month of purchase. Center for Puppetry Arts is a nonprofit 501(c)(3) organization and as such a portion of your Membership contribution may be tax deductible to the full extent of the law. Any tax deduction is limited to the excess of the contribution over the fair market value of any items received in exchange for the donation. All benefits are subject to change. All events are subject to availability.

Memberships Make Great Gifts, Too!

Visit puppet.org/visit/become-a-member or call the Ticket Sales Office at **404.873.3391** for details.

All Membership Levels Enjoy:

Free admission to the
Worlds of Puppetry Museum

Handling fee waived for
online ticket purchases

10% discount on all
Gift Shop purchases

Stuff to Know

Plan Your Visit

Hours & Contact Information

Ticket Sales Office

Tuesday-Friday: 9am–5pm
Saturday: 10am–5pm
Sunday: 12noon–5pm

Phone: 404.873.3391
Email: tickets@puppet.org

General Inquiries

Administrative: 404.873.3089
Email: info@puppet.org

Business hours for most departments are
9am–5pm, Mon–Fri.

For a full list of contacts, visit puppet.org.
Ticket Sales hours subject to change.

Museum

Tuesday-Saturday: 10am–5pm
Sunday: 12noon–5pm

Last admission at 4pm.

Museum Store Hours

Tuesday-Saturday: 10am–5pm
Sunday: 12noon–5pm

Closed to the public on Mondays.

Closed on major holidays.

Extended hours during evening performances.

Stuff to Know

- **PREVENT DISAPPOINTMENT! Advance purchase is HIGHLY recommended** as many shows sell out early.
- **All adults and children, ages two and up, must have a ticket.**
- Family Series performances have General Admission seating.
- **Arrive at least 30 minutes prior to your first event** to allow time for parking, check-in, last-minute bathroom breaks, and seating.
- Contact the Ticket Sales Office to receive rainchecks for unused tickets; **the Center does not issue refunds** on unused tickets.
- Contact the Ticket Sales Office at least **72 hours in advance to redeem vouchers/rainchecks**. **Vouchers/rainchecks cannot be redeemed online.**
- The Center for Puppetry Arts strives to make all our activities accessible to all patrons. **Please notify the Ticket Sales Office in advance of your visit if you have any unique mobility or sensory needs.**
- **Limited free parking is available.** We're also MARTA accessible—only a short walk from the Arts Center Station.
- Be sure to visit our unique playground space, the **Isdell Family Play Area**—it's great for kids of all ages to stretch all sorts of muscles (adult supervision required, weather permitting).

Having an Auction or Other Fundraiser?

We may be able to offer up to 4 tickets to the *Worlds of Puppetry Museum* to support your auction or fundraiser. Visit PUPPET.ORG/DONATIONS for details.

Confirmation

After you schedule your date, you will receive a Confirmation email. You must immediately review the email to confirm your reservation and then reply to it with approval. If you do not receive a Confirmation email within 2 business days, please call the Ticket Sales Office.

If you need additional seats after you have booked your group, check with the Ticket Sales Office for availability before the day of your trip.

Payment

Your Confirmation will include a Payment Due Date. Group payment is due 4 weeks prior to your event date. If you schedule your group less than 4 weeks before your event date, the Ticket Sales Office will assign a Payment Due Date. We reserve the right to cancel your reservation if you do not respond to calls concerning a late payment or have not made a payment agreement.

Title I Schools

The Center offers a special Title I rate for performance-only Family Series tickets. Georgia schools that are certified as Title I must provide a copy of their certification to receive this rate. For more information, call the Ticket Sales Office.

Arrival

Arrive at least 30 minutes before the start of your first activity to allow time to park, check in with the Ticket Sales Office, etc. Please notify the Ticket Sales Office if you are running late.

Check-In

- The group leader is required to check in with an accurate head count of the number of children and adults attending. The number of seats purchased, including any complimentary seats, will be verified at the Ticket Sales Office.
- A total head count of everyone in your group will include all students, teachers, chaperones, and bus drivers. Everyone must have a ticket to enter the Center.
- Group tickets are not refundable. Rainchecks will be issued for tickets not used on the day of your visit.

A Few More Things

- The Center for Puppetry Arts strives to make all our activities accessible to all patrons. Please notify the Ticket Sales Office in advance of your visit if you have any unique mobility or sensory needs.
- School dates can fill up very early. We suggest that you reserve no later than 1-2 months before your preferred date. If your preferred date is unavailable, there is a chance that space may become available at a later date, so please call the Ticket Sales Office to check for availability.
- Discounts are available for groups booking multiple productions throughout the season. Please call the Ticket Sales Office for more information.
- All activities, dates, and times are subject to change.

Pricing For Groups

We know that planning a group trip is no easy task! Our Ticket Sales Office is open Tuesday through Sunday to answer your questions and to schedule your group trip. Call **404.873.3391**.

School group rates apply to the following:

- Public & private schools
- Daycare centers
- Title I schools
- Home educators
- Religious schools

Activity / Event	School Groups (Pre-K through 12th)	Other Groups
Family Series Performances		
Show Admission	\$8.50	\$12.50
<i>Rudolph the Red-Nosed Reindeer® and Pete the Cat prices vary by date & time. Please check puppet.org or call the Ticket Sales Office.</i>		
Museum		
Museum Admission (Self-Guided)	\$4.00	\$8.50
Create-A-Puppet Workshops™		
At the Center	\$4.75	\$5.75
To-Go Kit	\$4.50	\$4.75
Discovery Days Activities + Museum		
Activities + Museum (Self-Guided)	\$8.50	\$10.50
<i>For all other activities at the Center please call the Ticket Sales Office at 404.873.3391.</i>		

All dates, prices, and times are subject to change. All seats are subject to availability.

